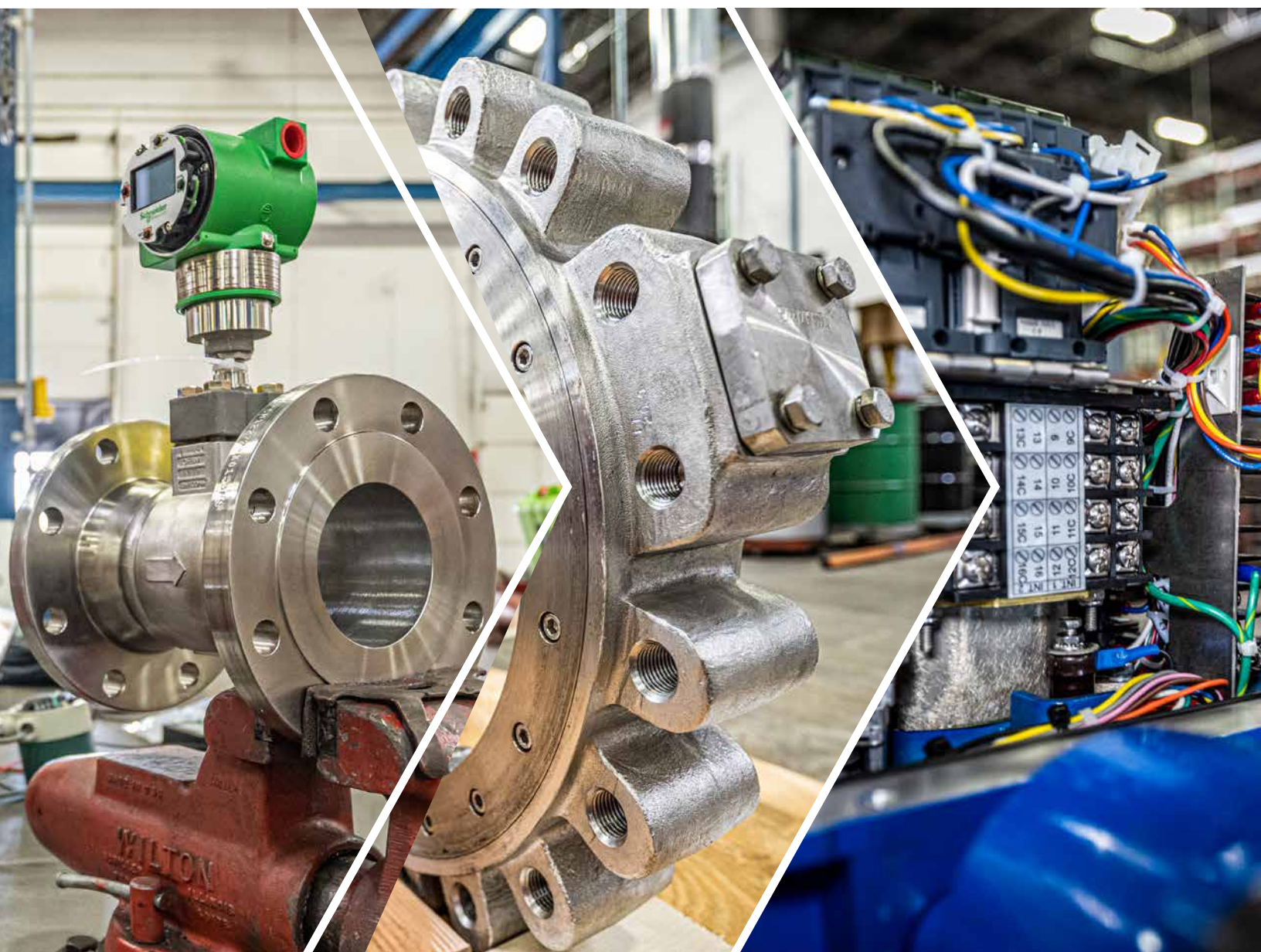


MCE»»
FLOW CONTROL

SWANSONFLO»»
AN MCE»» COMPANY

WE SOLVE PROBLEMS

MCE Flow Control Line Card in Indiana



Swanson Flo provides innovative process control solutions through quality equipment and experienced application engineering with an unrelenting desire to create proactive customer relationships.

» VALVES



Ball valve and actuation solutions for the process and purity markets.



Superior quality ball valves, butterfly valves, actuators, and control accessories.



High performance butterfly valves in standard and fire safe configurations.



Proven, durable level transmitter isolation valves.



HC4 sanitary diaphragm valves and industrial diaphragm valves.



Proven leader with recognized quality in flow control valves.



Valves and regulators, with Jordan's innovative sliding gate, for a wide range of applications.



Sanitary valves including pressure regulators, back pressure regulators, gas pressure regulators, control valves, steam traps, check valves, and more.



LowFlow control valves, including fractional, pneumatic, and high pressure valves.



Instrumentation products including manifold, needle, mono-weld and mono-flange valves.



Two piece, three piece, flanged, and multiport valves, non-standard ball valves, and automated accessories.



ARI-REYCO series of direct spring acting safety relief valves for gas, liquid, and steam service.



INSTRUMENTATION



Panalarm annunciators, Rochester Instruments power quality equipment, Scientific Columbus transducers, Jemstar revenue meters.



Comprehensive offering of Foxboro instrumentation, field device, and remote operations solutions.



Flowmeter technologies, including Dynasonics® ultrasonic flow meters and Preso® differential pressure flow meters.



Liquid, level, flow, and pressure sensing solutions.



Turbine meters for liquid and gas. Flow signal conditioners and displays.



Pressure gauges, switches, transducers & transmitters, level transmitters, temperature measurement solutions, bore and large bore needle & manifold valves, and diaphragm seals.



PFA and PTFE flowmeters for leak-free, precise control.



Temperature sensing devices. NIST traceable calibrations. Thermocouples, RTD's, custom assemblies.



Liquid level gages and valves, steam gauges, capacitance columns and switches, magnetic gauges, armored tubular and sight flow indicators.



High performance thermal mass flow meters for gas flow that provide an "In-Situ Calibration Check."



High accuracy transducers, rugged pressure transmitters, and pressure sensors.



Ultrapure and potable water quality instruments, on-line water analyzers, measurement and control packages.



DIN rail mount power supplies, terminal blocks, and relays. Heavy duty connectors, Power distribution blocks, Hazardous ATEX, IECEx, ULEx rated enclosures.



»» ACTUATION & ACCESSORIES



Pneumatic and electro-pneumatic valve positioners.



Solenoid valves for process automation.



Ball valve and actuation solutions for the process and purity markets.



Limit switches, sensors, and bus networking products.



Pneumatic, hydraulic, and electric quarter-turn and linear valve actuators.



Rack & pinion and electric quarter turn actuators and accessories.



Unique rack & pinion pneumatic actuators and accessories.



Wide range of pneumatic and electric actuators, shutoff assemblies, and control assemblies.

»» SPECIALTIES



Regulator and high, medium, and low pressure filtration.



Industrial UPS systems, single and three phase. Battery chargers. Static inverters and voltage regulators.



» SERVICE AND REPAIR

MCE is a multi-brand, factory trained control valve repair center with premium mobile repair solutions.

IN-HOUSE & IN-FIELD SERVICE

- Multi-brand factory trained control valve repair center
- Foxboro Authorized Service Provider (FASP)
- Authorized Limatorque “Blue Ribbon” facility
- Manufacturer authorized for Ashcroft and Quest-Tech (Level-Arc Repair)
- In-house vacuum fill chamber for diaphragm seal repair
- Valve actuation assembly and repair including field service
- Instrument field calibration, repair, and troubleshooting
- Full gauge assembly and calibration
- Preventive maintenance programs
- Predictive technology

TRAINING & EDUCATION

- Product knowledge
- Maintenance operations
- On-site sessions available
- Customized, tailored

**LEARN MORE AT MCEAUTOMATION.COM OR SPEAK
TO AN MCE REPRESENTATIVE TODAY AT 1-800-288-7926**

IN PARTNERSHIP WITH MCE COMPANIES

NIGHTWINE»
VALVES & ACTUATION
AN MCE» COMPANY

BIOFUELS»
AUTOMATION
AN MCE» COMPANY



WE ARE MCE

Founded in 1951, MCE is bringing together the industry's top solution providers under one roof to create a revolutionary set of capabilities across your technical applications in fluid, flow, air, automation, and hydraulics.

We are committed to solving your greatest challenges:



**PREMIUM-QUALITY
PRODUCTS**



**SERVICE, SUPPORT,
AND REPAIR**



**TECHNICAL
EXPERTISE**



**TRAINING TO SUPPORT
YOUR NEEDS**



OUR PROMISE TO YOU

Every product and solution we offer is designed to meet your specific needs and unique circumstances.

More than 50,000 products on hand at **25 stocking locations** including **19 walk-in stores** and **8 manufacturing facilities**.

LEARN MORE ABOUT OUR FULL SET OF CAPABILITIES AT
[MCEAUTOMATION.COM](https://mceautomation.com)