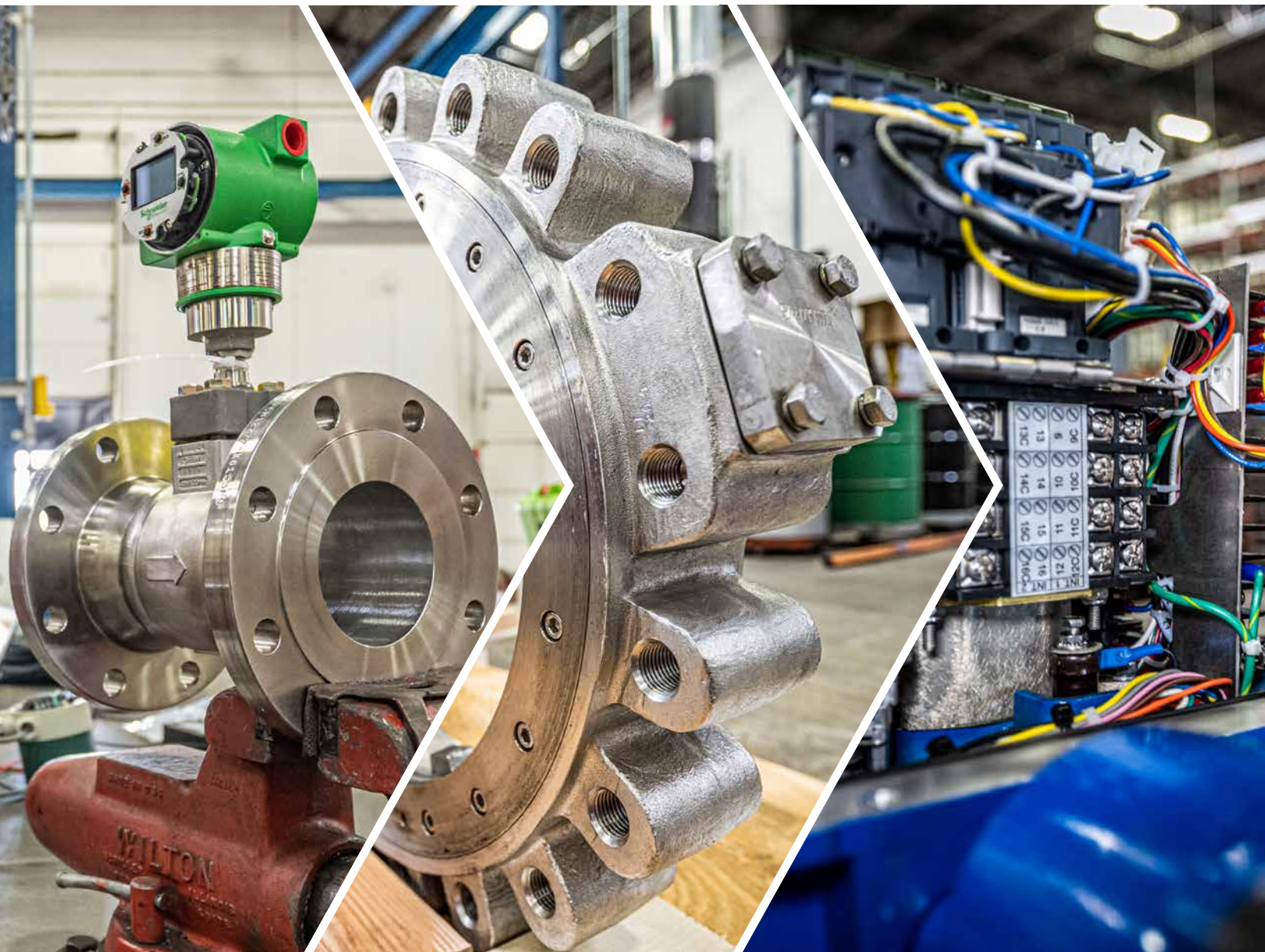




WE SOLVE PROBLEMS

MCE Flow Control Line Card in Ohio



MCE Flow Control provides complete process control solutions and services to customers in Ohio, with offerings across the industry's premier vendors in valves, actuators, instrumentation, regulators & tank venting, and steam & condensate.

VALVES



Ball valve and actuation solutions for the process and purity markets.



ARI-REYCO series of direct spring acting safety relief valves for gas, liquid, and steam service.



RedHat solenoid valves and angle seat globe valves.



Offering a range of high-performance butterfly and check valves.



Superior quality ball valves, butterfly valves, actuators, and control accessories.



Industrial and Sanitary Dry Break couplings.



Atomac Valves



Duro Valves

Non-lubricated plug valves for chemical service, PFA lined plug valves, and BX2 high-performance butterfly valves.



Low emission industrial ball valves, ANSI class 150 through 1500.



HC4 sanitary diaphragm valves and industrial diaphragm valves.



Range of specialty valves, including high pressure, hygienic/sanitary, butterfly, and more.



PFA lined ball, butterfly, check, and diaphragm valves. Complete sampling valve systems.



»» ACTUATORS & AUTOMATION



Solenoid valves and pneumatic controls for process automation.



Offering a range of pneumatic actuators and accessories.



Automax actuators, limit switches, and positioners provide unparalleled performance.



Limit switches, sensors, and bus networking products.



Including a range of pneumatic, diaphragm, and electric actuators and controls.



Limit switches, sensors, and bus networking products.



Wide range of pneumatic and electric actuators, shutoff assemblies, and control assemblies.



Serving top performing positioners, switch boxes, and valve control monitors.

»» INSTRUMENTATION



Process instrumentation for measurement of flow, pressure, temperature, level and analytical properties.



Variety of process observation accessories, including sight glasses, flow indicators, vessel lighting, and camera systems.



Industrial pressure gauges and pressure transmitters.



Liquid level, valve, and steam gauges.



Thermal mass flow meters.



Industrial transmitters and switches for flow, level, pressure, and vibration measurement.

»» REGULATOR, FILTRATION, AND LUBRICATION



Providing filters, regulators, and lubricators.

» SERVICE AND REPAIR

MCE is a multi-brand, factory trained control valve repair center with premium mobile repair solutions.

IN-HOUSE & IN-FIELD SERVICE

- Multi-brand factory trained control valve repair center
- Foxboro Authorized Service Provider (FASP)
- Authorized Limatorque “Blue Ribbon” facility
- Manufacturer authorized for Ashcroft and Quest-Tech (Level-Arc Repair)
- In-house vacuum fill chamber for diaphragm seal repair
- Valve actuation assembly and repair including field service
- Instrument field calibration, repair, and troubleshooting
- Full gauge assembly and calibration
- Preventive maintenance programs
- Predictive technology

TRAINING & EDUCATION

- Product knowledge
- Maintenance operations
- On-site sessions available
- Customized, tailored

**LEARN MORE AT [MCEAUTOMATION.COM](https://mceautomation.com) OR SPEAK
TO AN MCE REPRESENTATIVE TODAY AT 1-800-288-7926**

IN PARTNERSHIP WITH MCE COMPANIES

SWANSONFLO»
AN MCE COMPANY

BIOFUELS»
AUTOMATION
AN MCE COMPANY

